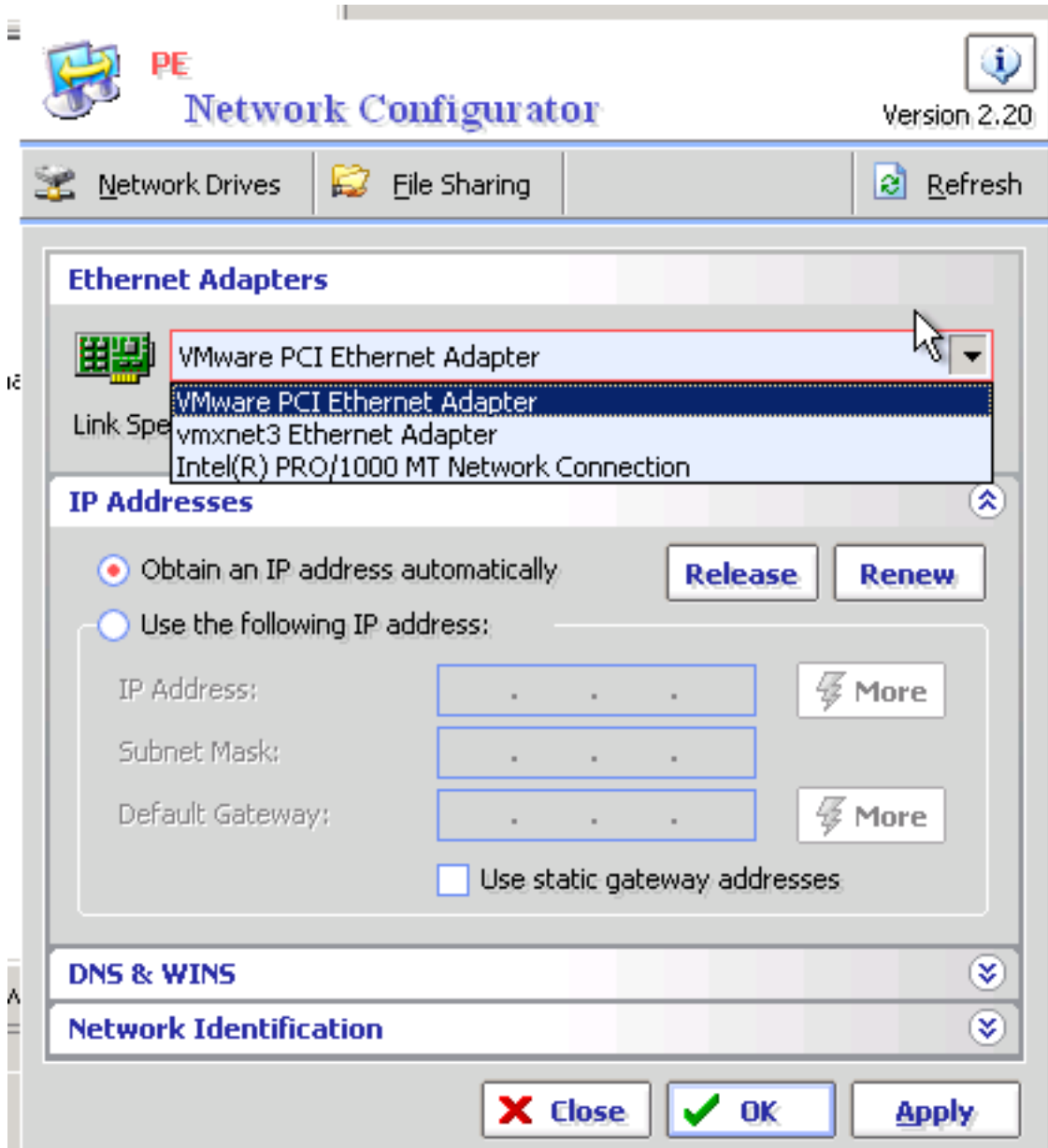


MOA

vmxnet3 driver for BartPE

For BartPE based on 2003 this works - add this as plugin - do not use regular procedure.
Archive is attached

Result:



; PE Builder v3 plug-in INF file
; <http://www.nu2.nu/pebuilder/>
;
; vmxnet2and3.inf
; for vmxnet2 and vmxnet3
; Created by Sanbarrow

[Version]
Signature= "\$Windows NT\$"

[PEBuilder]

MOA

Name="vmxnet2and3"

Enable=1

[SourceDisksFiles]

files\vmxnet.inf=20,,1

files\vmxnet.sys=4,,1

files\vmxnet3n51x86.sys=4,,1

files\vmxnet3ndis5.inf=20,,1

Unique solution ID: #1128

Author: Ulli Hankeln

Last update: 2011-05-31 19:38